

Signature Corner (w/ Stiffener Brace) Installation Instructions

Process Description: Signature Corner Bracket and Magnet Installation

Revised Date

27-Aug-25

Created by
ID#

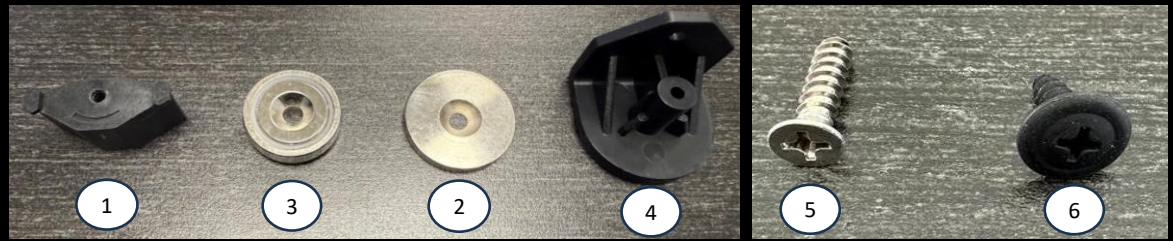
John Tumanguil
Process name

Approved by

Method

1

Parts



- 1 - Part # 2005340: Signature Frame Corner Screw Boss Insert
- 2 - Part # 2005103: Magnetic Steel Plate
- 3 - Part # 2005166: Magnet
- 4 - Part # 2005339: Signature Cabinet Corner Magnet Bracket
- 5 - Part # 2015552: 10-12x7/8" Screw (x2)
- 6 - Part # 2015196: 8x9/16" Screw

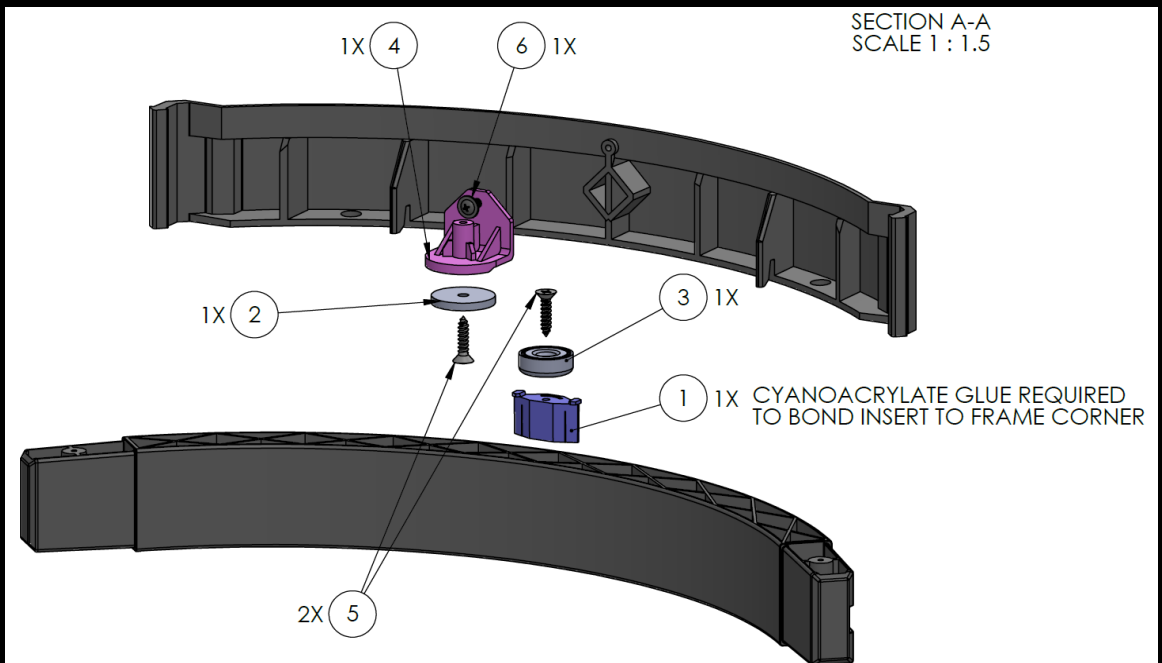
Examples of adhesives:



Note -- Glue: You will need an Cyanoacrylate adhesive, which is found in most crazy glues.

2

Overview



Signature Corner (w/ Stiffener Brace) Installation Instructions

Process Description: Signature Corner Bracket and Magnet Installation

Revised Date

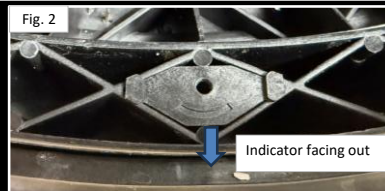
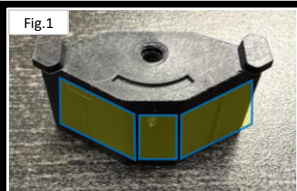
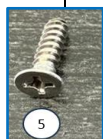
27-Aug-25

Created by

John Tumanguil

Approved by

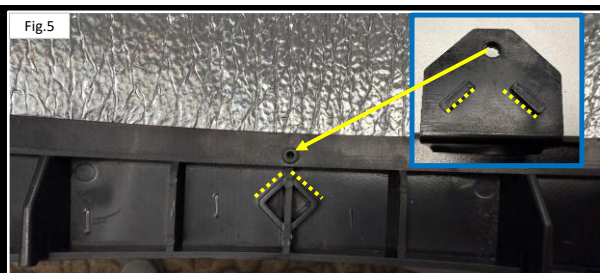
Method



1. Apply glue to the outer surface of ① all around. (Fig. 1)
2. Ensure ① is in the correct orientation, with the indicator mark facing outwards. (Fig. 2)



3. Insert ① into the center diamond slot of the corner frame until it bottoms out. This will be the 5th diamond slot. (Fig. 3)
4. Install ③ on to ① using the screw ⑤. (Fig. 4)



5. Line up ④ to the corner stiffener brace (Fig. 5) and install using screw ②. (Fig. 6)



6. Install ② on to ④ using screw ⑤.

Signature
Frame
Corner
Screw Boss
Insert
Installation

Steel Plate
Installation
on to
Corner
Stiffener
Brace